



Virtual witness of full-scale testing using Subsea Live

Schlumberger Digital Forum

Richard Crichton
Project Manager
Ormen Lange Subsea
Compression



Ormen Lange Field

75 to 85%

Improved
recovery factor

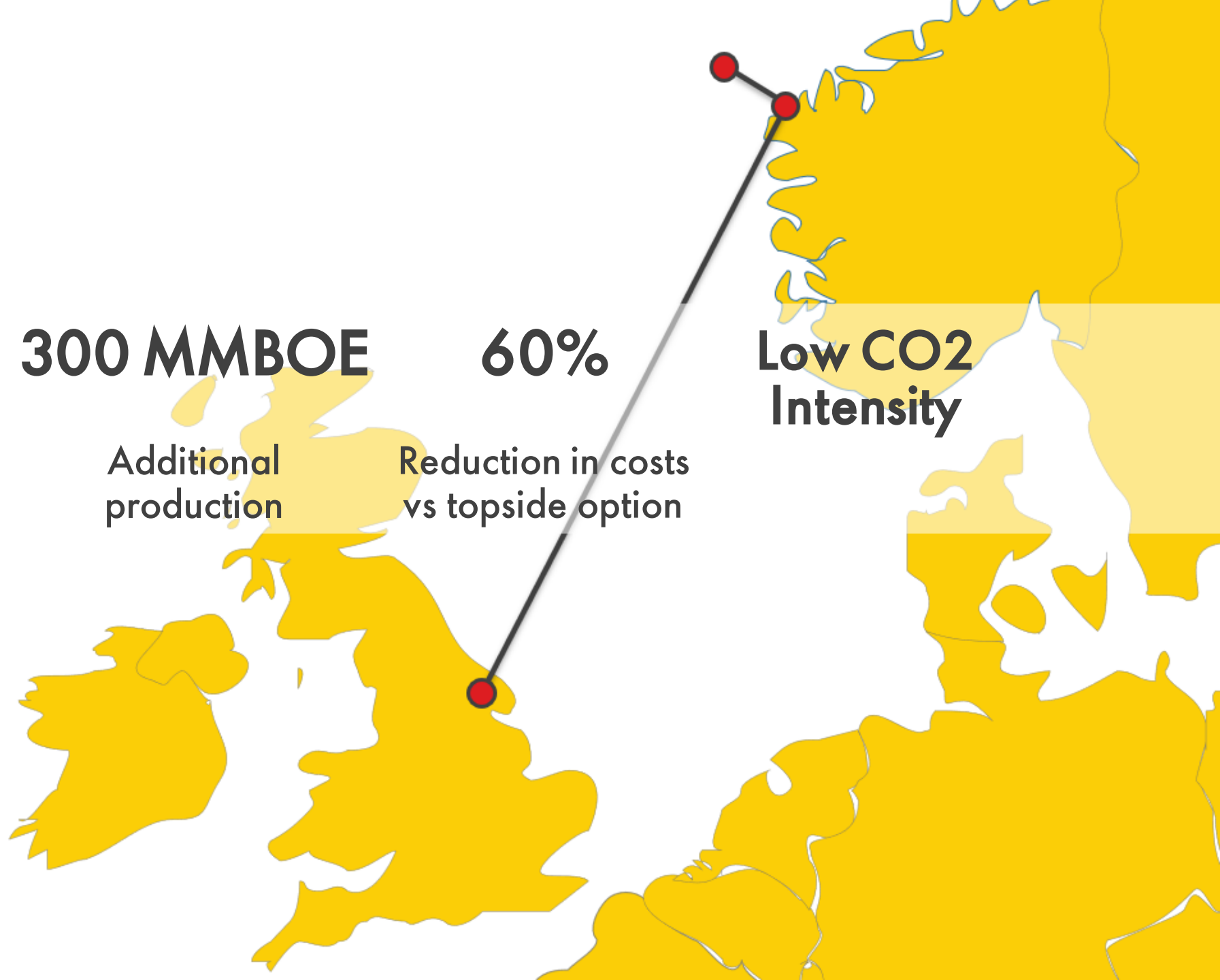
300 MMBOE

Additional
production

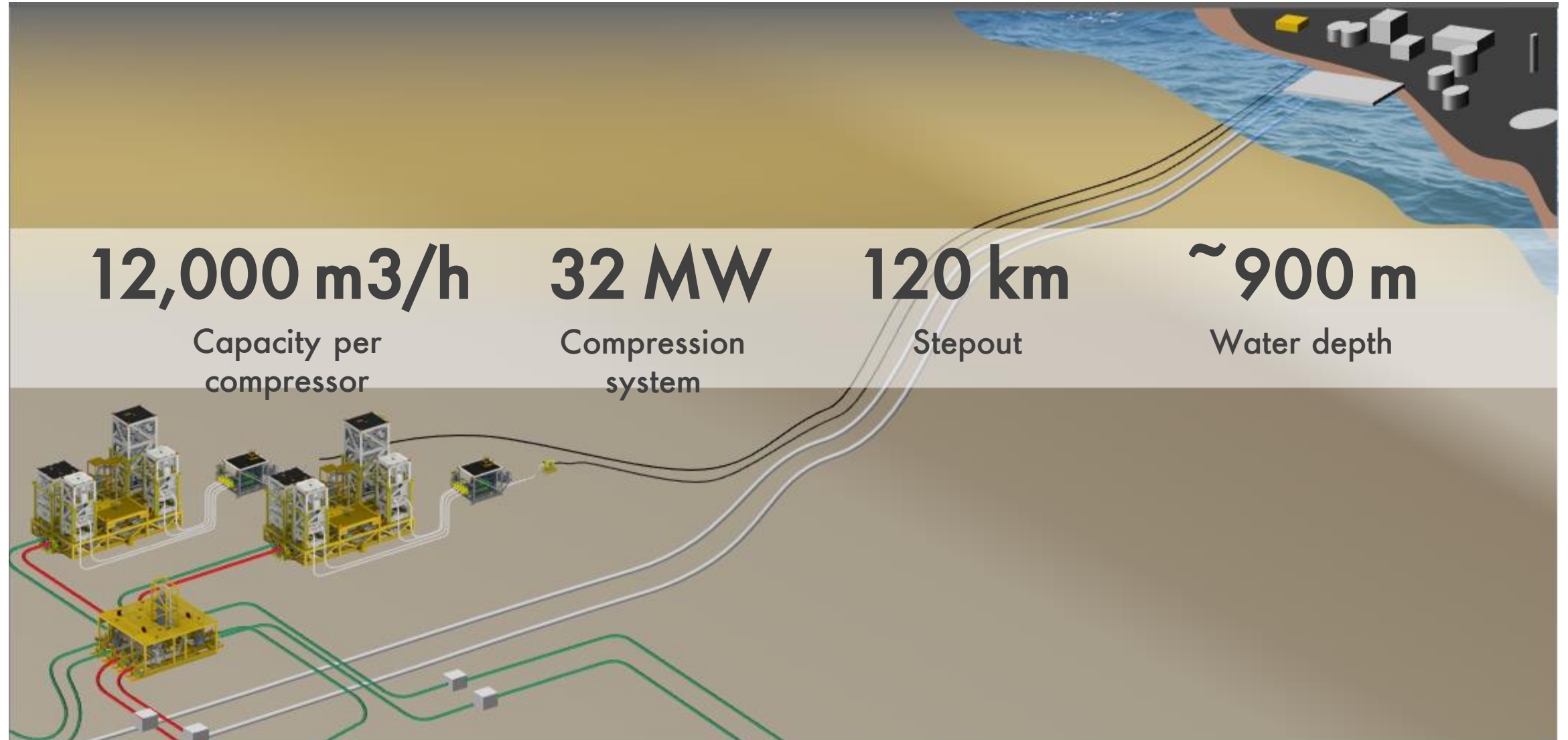
60%

Reduction in costs
vs topside option

**Low CO2
Intensity**

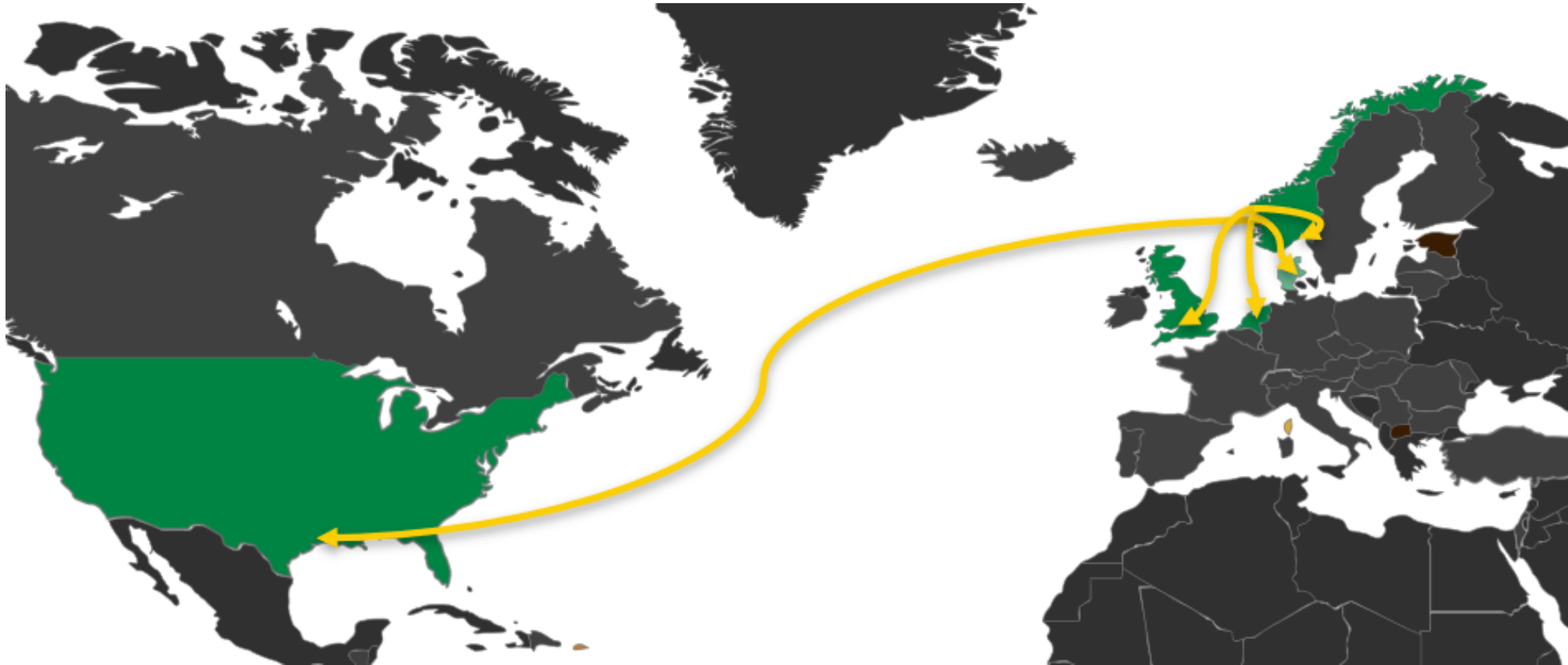


Ormen Lange Subsea Compression



The Challenges – Work In Progress

- High stakeholder interest
- Widespread locations
- COVID travel constraints
- Challenging timeline



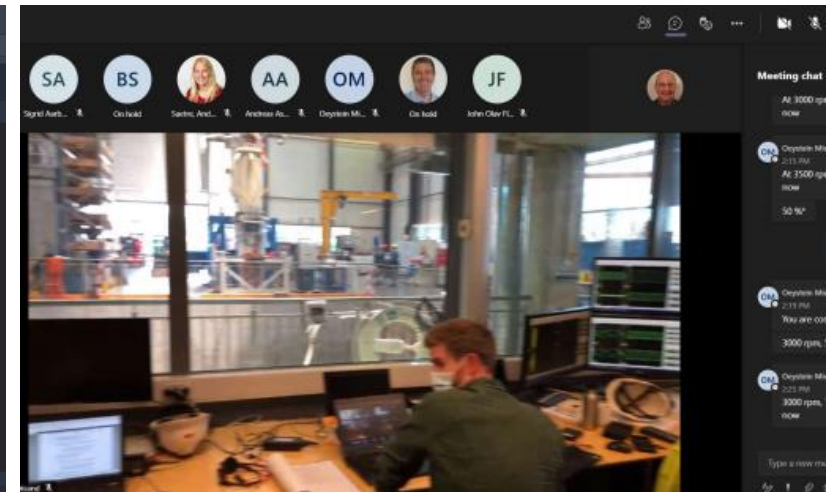
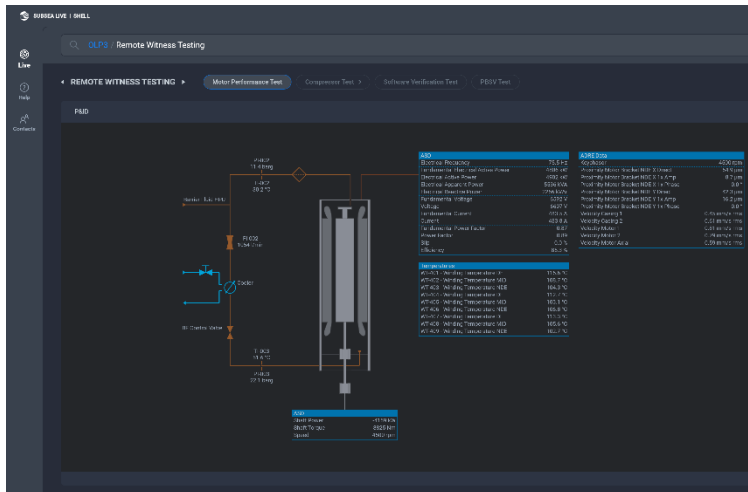
The Outcomes - Technical

- Compressor testing and software verification test (SVT) witnessed remotely
- Physical test performed at Horsøy with robust COVID controls maintained
- Real-time data available in Subsea Live for all participants

Compressor test loop



Subsea Live as seen in the Control Room



The Outcomes – One Team

- Achieved Goal Zero with significantly reduced HSSE exposure
- Real-time collaboration across Shell, OneSubsea and Joint Venture partners
- Full alignment on test acceptance achieved in short timeline supporting early FID



The Outcome - Business

- Joint Venture partnership alignment
- Early Final Investment Decision (FID)
- Secure capacity in supply chain
- Regulatory submissions complete

Norwegian Ministry of Petroleum and Energy



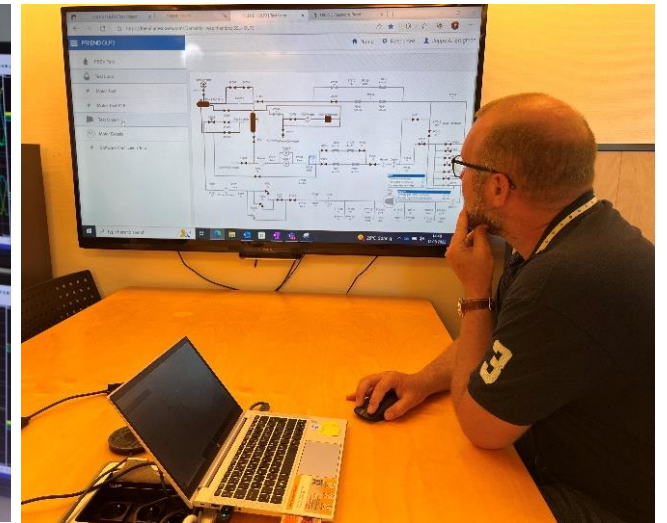
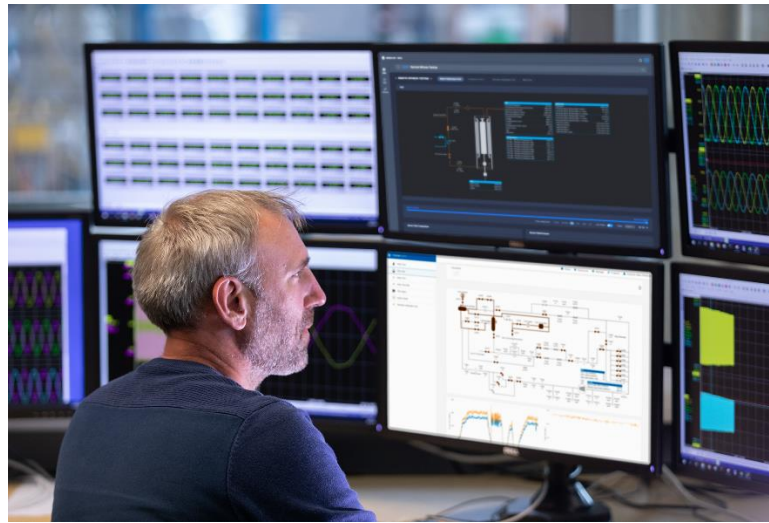
Copyright of Shell International B.V.



September 2022

Future Potential

- Continue to support project delivery
 - Equipment testing (Power / System Operating Test)
 - Commissioning
 - Start-up and operation
- Enhancing capability for field surveillance



Conclusion

- Digital tools are not new
- Value arises from ways of using the existing tools
- Single source data available in real time
- A structured way to access and present data to optimize future operation of equipment



Unlocking Value, Enabling Low Carbon





The End Customer



Questions and Answers

Q&A